



Westchester Land Trust

TOGETHER WE GROW

PROTECTING THE LAND
YOU LOVE SINCE 1988



WESTCHESTERLANDTRUST.ORG

At Westchester Land Trust, we believe that connecting people to nature is not just our responsibility; it's our honor as fellow caretakers of the spaces we call home.

Since 1988, we have worked to preserve land forever, safeguard the natural treasures of our communities, and enhance the deep-rooted connections between people and the land.

OUR MISSION

Westchester Land Trust works together with public and private partners to preserve land in perpetuity, and to protect and enhance the natural resources in our communities.

OUR VISION

Our vision is to protect open spaces for generations to come.



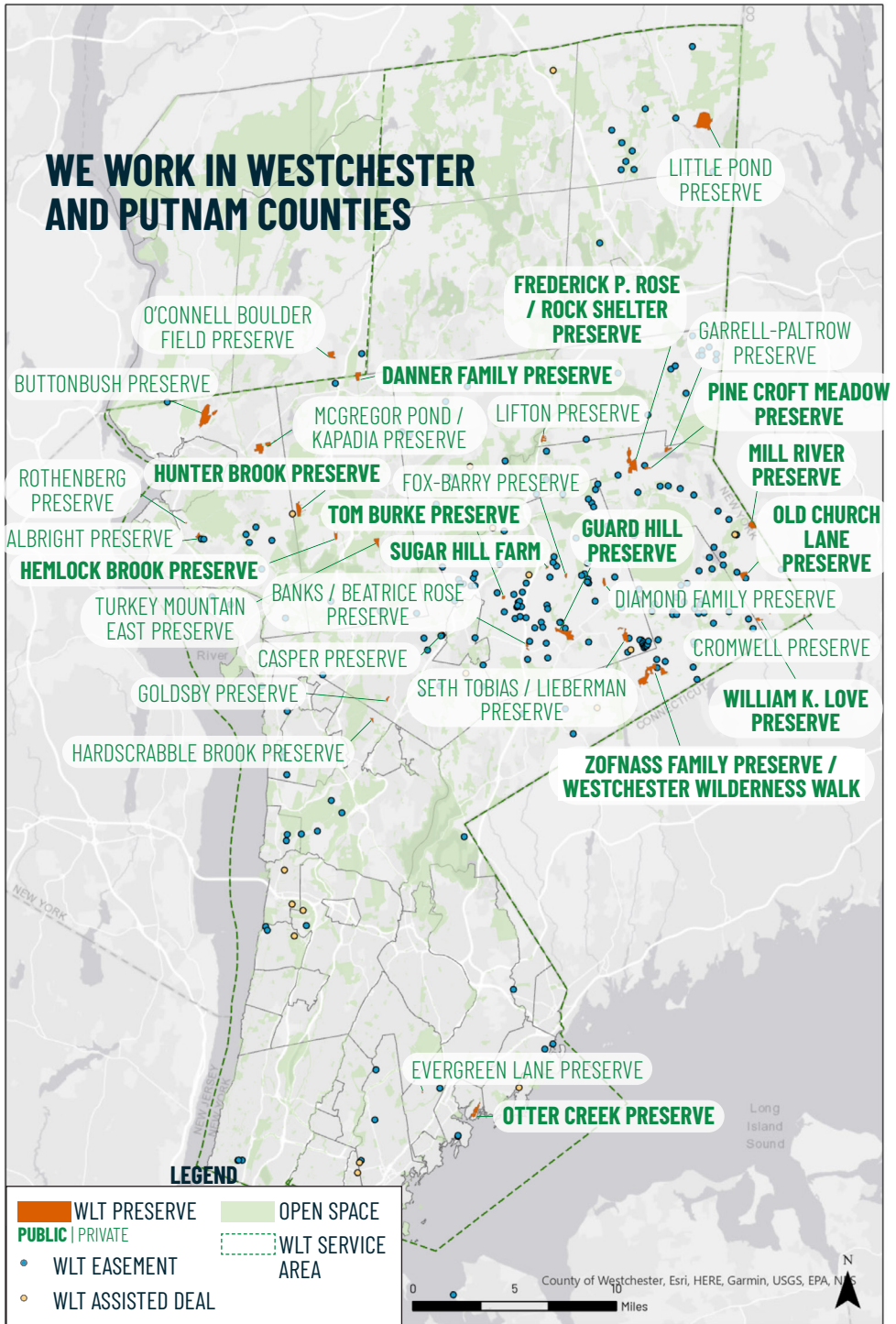


A HISTORY ROOTED IN COMMUNITY

Westchester Land Trust was founded in 1988 by a group of Lewisboro and Bedford residents who wanted to protect environmentally important areas in their towns and cities. They believed that protecting forests, meadows, and other natural spaces did not have to be at odds with meeting the housing needs of local communities. The driving force behind Westchester Land Trust's formation was its president and chief executive officer, Louis McCagg, who established our goals:

“First, to educate or raise the consciousness of all categories of landowners... to think through what they want to do with their land to achieve environmental and economic objectives; and second, to provide facilitating support to local authorities seeking to implement sound housing policies.”

WE WORK IN WESTCHESTER AND PUTNAM COUNTIES



WE PROTECT THIS LAND FOR YOU

Westchester Land Trust protects many preserves with trails that are open to the public year round, free of charge. We invite everyone to get outside and enjoy the meadows, forests, wetlands, scenic vistas, and natural beauty that make Westchester and Putnam counties a special place to live.

PUBLIC PRESERVES

Danner Family Preserve *Jefferson Valley*

Frederick P. Rose Preserve *Waccabuc*

Guard Hill Preserve *Bedford Village*

Hemlock Brook Preserve *Yorktown*

Hunter Brook Preserve *Yorktown*

Mill River Preserve *South Salem*

Old Church Lane Preserve *South Salem/Vista*

Otter Creek Preserve *Mamaroneck*

Pine Croft Meadow Preserve *Waccabuc*

Rock Shelter Preserve *Waccabuc*

Sugar Hill Farm *Bedford Hills*

Tom Burke Preserve *Bedford Hills*

Westchester Wilderness Walk / Zofnass Family Preserve *Pound Ridge*

William K. Love Preserve *Lewisboro*

Westchester Land Trust has protected over 9,250 acres of land, including 1,200 acres that are open to the public.

Did you know: *One of the most common ways we preserve land is through conservation easements, which are legal agreements that let people retain ownership of their property while protecting the land from development forever.*

Contact info@westchesterlandtrust.org to learn how you can protect your land.

Visit westchesterlandtrust.org/preserves to find directions to your local preserve.

A RECOMMITMENT TO SERVING URBAN COMMUNITIES

Since our founding, Westchester Land Trust has strived to protect land, raise awareness about the importance of green space, and work with cities and towns to support planning that balances land protection and adequate housing.

Our early projects, including **community gardens, educational forums, and park restorations**, showed our commitment to servicing all communities, regardless of the size of the parcels they were interested in protecting or stewarding.

After many years of focusing on rural and suburban land protection, we're rededicating ourselves to our urban communities. This process is ongoing and we're listening to better understand the needs of the people we serve in our cities. This work is coming to life through **urban land protection, food distribution, and educational outreach**.

Connections to nature are important everywhere—We're here to help all communities use their land in the ways that best meet their needs.



As part of a collaborative food justice program, 'A Love Letter to Nature,' Westchester Land Trust worked with local partners to distribute 450 grow bags to the Mount Vernon community.

Each grow bag produced dozens of pounds of fresh, nutritious veggies.

Top right: In our early years, Westchester Land Trust supported community gardens in Yonkers, Mt. Kisco, and other urban centers.

Bottom right: Student at WLT's Pollinator Pop-Up exhibit in Mount Vernon.



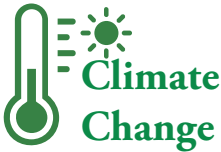


CARING FOR LAND

Our work starts with protecting land but it doesn't end there. When we conserve natural spaces we make a commitment to nurture the land and wildlife habitat for generations to come. To take care of the land we protect, WLT's stewardship staff and a roster of volunteers:

- Monitor our preserve and easement boundaries
- Restore habitat for wildlife
- Remove invasive species and other threats to forest health
- Build and maintain trails for public use
- Repair damage from extreme weather

STEWARDSHIP CHALLENGES



Warming temperatures are shifting habitats and extreme weather events frequently cause damage to our preserves.



Invasive species displace native plants and trees by capturing valuable sunlight, water, and nutrients.



Harmful pests and pathogens are wiping out entire species, leaving our forests vulnerable to invasive species, extreme weather, and other threats.

Alex Warren (left) was a summer conservation apprentice with WLT. The seasonal internship program is designed to help the next generation of conservationists gain hands-on experience in the field.

JOIN OUR MISSION

Westchester Land Trust works *for* and *with* the communities we serve. People are at the heart of our mission and we welcome you to join us in building a better future. There are many ways to get involved with our work.

Nature is for you—we offer opportunities for people of all ages, experiences, and backgrounds to be a part of our shared community.

VOLUNTEER: Lend a hand on the trails, at our Sugar Hill Farm food pantry garden, in the office, or at a WLT event. Volunteers make our work possible.

PROTECT LAND: Whether it's a quarter acre or 200 acres, WLT can help protect your land forever. And if you have agricultural land, we're happy to connect you with farmers seeking places to grow.

DONATE: A gift to WLT is an investment in a brighter future for us all. One-time donations, monthly sustaining support, and planned giving are crucial to protecting the land you love.

SHARE THE LOVE: Nature can inspire awe, bring us peace, and instill joy in our hearts. Introduce a friend or community member to your favorite WLT preserve and encourage them to support our work.

SUPPORT FUTURE CONSERVATIONISTS: Our seasonal apprenticeship program helps youth conservationists gain valuable hands-on experience. You can support this initiative with a donation or by encouraging the aspiring conservationists in your life to apply.

PHOTO CREDITS

Cover: Brien Adams

Page 2: WLT staff

Page 3: WLT archives

Page 7: WLT archives, Brien Adams

Page 8: Gigi Pothiwit

Page 11: John Zeiger, WLT staff

Page 12: Brien Adams

On the trails, at the farm, and in the office, our dedicated volunteers make our work possible.





JOIN US TO PROTECT THE LAND YOU LOVE.



The accreditation seal is awarded to land trusts meeting the highest national standards for excellence and conservation permanence.



SCAN TO DONATE



Westchester Land Trust

PH: 914-234-6992
@WESTCHESTERLANDTRUST

WESTCHESTERLANDTRUST.ORG

403 HARRIS ROAD
BEDFORD HILLS, NY 10507

