

Easy Native Pollinator Plants for Sunny Places

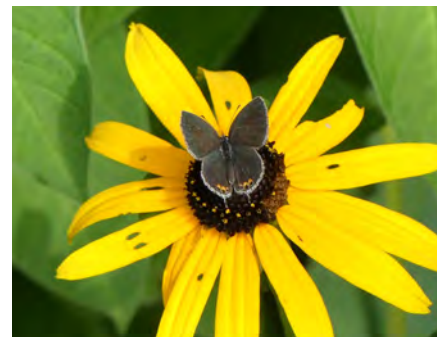
Beautiful, deer-resistant bee and butterfly favorites! Compact enough for smaller gardens, low-maintenance once established, and tough enough for urban conditions.
For medium/dry soils.



Foxglove beardtongue
Penstemon digitalis



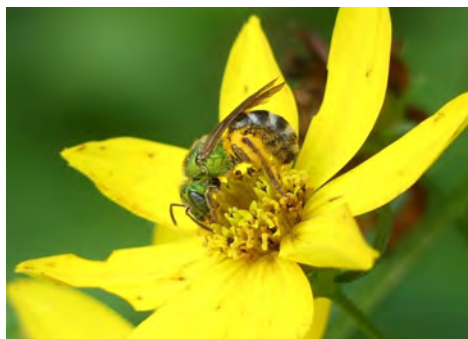
Butterfly weed
Asclepias tuberosa



Black-eyed Susan
Rudbeckia fulgida



Blazing star
Liatriis spicata



Tickseed
Coreopsis verticillata



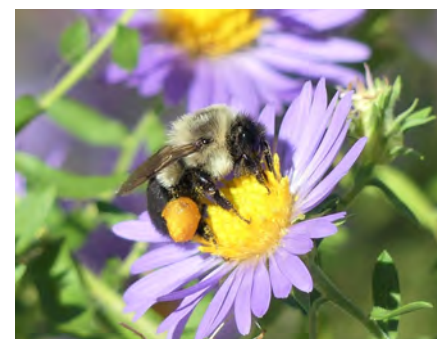
Coneflower
Echinacea purpurea



Anise hyssop
Agastache foeniculum



Fireworks goldenrod
Solidago rugosa 'Fireworks'



Aromatic aster
Symphotrichum oblongifolium



Thanks to Con Edison for partially funding this Westchester Land Trust program and for supporting local efforts to make our communities more pollinator friendly.

For more information on pollinators, visit bit.ly/WLTbees.

